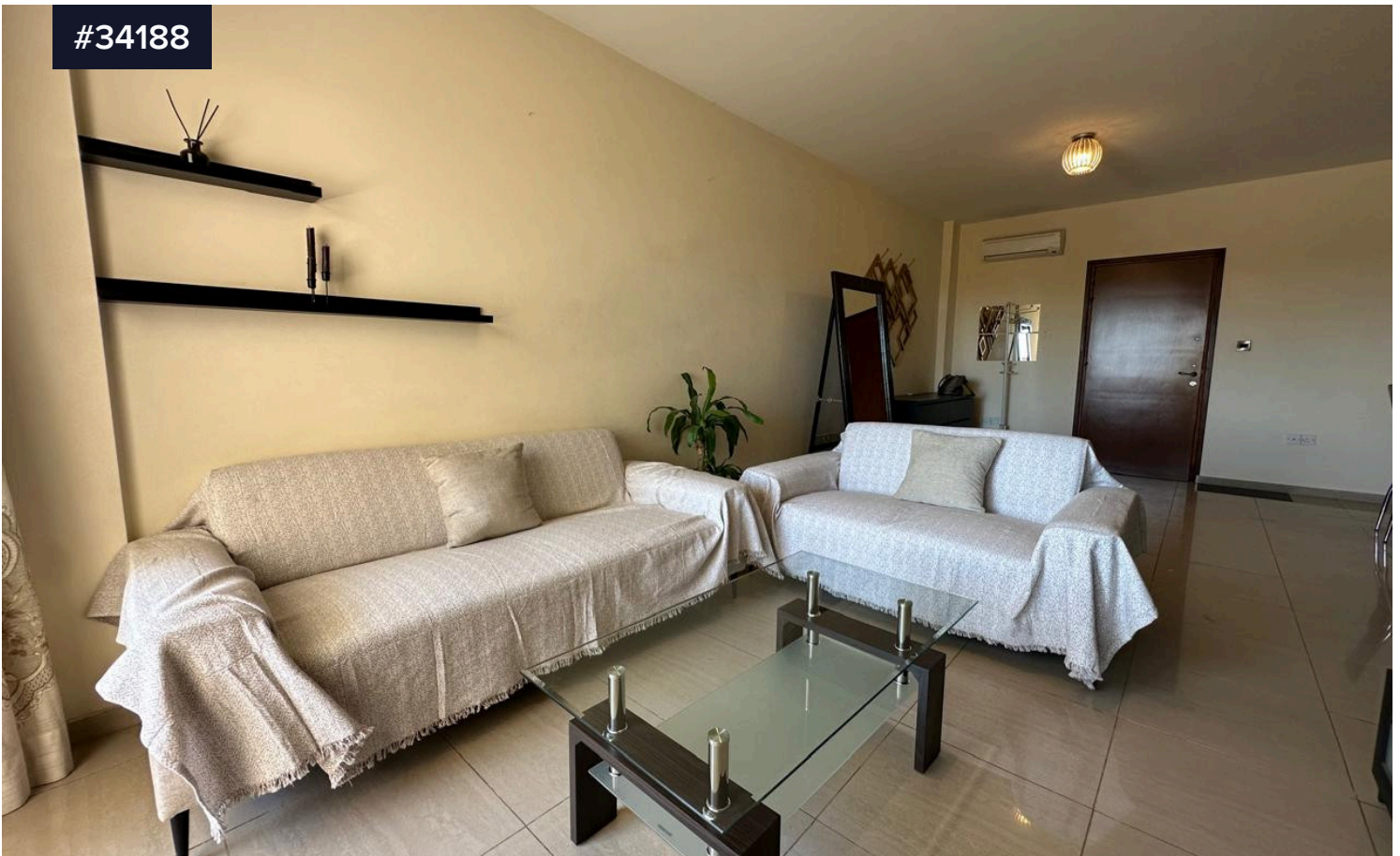


#34188



## Two-Bedroom Apartment for Rent in Panthea – Mesa Geitonia,

€1,300 /month

 Panthea, Limassol

Bedrooms

 2

Bathrooms

 1

Total covered area

 118 m<sup>2</sup>

Type

Apartment

Status

Used

Year of construction

2010

Energy efficiency rating

 B

Located in the highly sought-after residential area of Panthea – Mesa Geitonia, this beautifully renovated 2-bedroom apartment offers the perfect combination of comfort, convenience, and peaceful living.

Situated on the 1st floor of a well-maintained three-storey building, the apartment was originally built in 2010 and renovated in 2024, presenting modern interiors and a practical layout ideal for professionals, couples, or small families.

